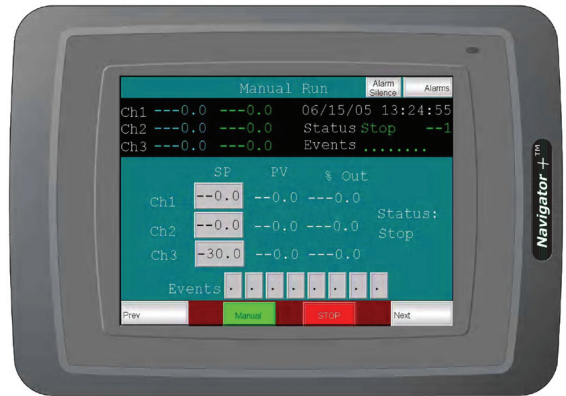




>Navigator+™ Touchscreen Programmer/Controller



Navigator +™ Touch Screen Programmer/ Controller

The Envirotronics Navigator+™ Programmer/Controller is the newest instrument in the roster of touchscreen controllers from Envirotronics. Expanded communication possibilities include built-in RS232 and RS422/485 ports as well as Ethernet and both USB host and device connection ports. Remote management and "viewing" across an intranet or internet connection, the ability to add PC peripherals such as keyboard, mouse and printer, and high-speed connection for PC file transfer combine with the ease of touchscreen and intuitive command-screen design to make Navigator+™ a leap forward in programmer/controller technology.

Standard Features

- Touch Screen, TFT, 65,536 colors
- 640 x 480 display
- 400 MHz RISC CPU
- 32MB Intel Strata Flash, 64MB RAM
- Windows CE.NET 4.2
- RS232 (built-in) 9-pin D-SUB
- RS485/422 (built-in) 25-pin D-SUB
- Ethernet (built-in) 10/100Mbit RJ45/TP
- USB Host for keyboard, mouse, printers, etc.
- USB Device port for PC file transfer
- Internal CF memory slot for memory expansion 32 - 1024MB
- External CF data slot for data capture and extraction

Specifications

Channels:	3 Process Variables
Display:	65,536 Colors, TFT Display, Backlight Display: 6.5" Diagonal, Resolution: 640 x 480 Pixels
Operating System:	Microsoft Windows™ CE NET 4.2
Communications:	Ethernet 10/100 Mbit RJ45/TP, RS-232C 9-pin D-SUB RS-485/422 25-pin D-SUB, Web server software
Storage:	1MB onboard, up to 1GB optional - Test & data retrieval
Processors:	400 MHz RISC CPU, 32MB Intel™ Strata Flash, 64MB RAM
Peripherals:	1 USB Device for PC File Transfer 1 USB Host for Keyboard, Mouse, Printer (through PC)
Programming:	-Limited to onboard storage capacity
Software Features:	Full PLC diagnostics. Color graphic displays TCP/IP networking, Real Time clock with battery backup
Analog Inputs:	Process voltage inputs 8 standard assignable - expandable to 40 (optional), 16 bit resolution, T/C 0.1°C or 0.1°F Full temperature range

Analog Outputs:	Standard 0 (none)- up to 16 (optional) Outputting your choice of information
Digital I/O:	Standard I/O; 0 (none) - up to 128 in/128 out (optional) Output 2A, 250 VAC, Voltage input 24 VDC
Data Logging:	60 second intervals - data, setpoints, process variables, etc.
Alarms:	HLS-1, HLS-2, Circulator oil, HS oil pressure, HS thermal head, HS Hi/Lo pressure, LS oil pressure, LS thermal head SW, LS Hi/Lo pressure, HS water pressure, B oiler overtemp, Temp Sentry (optional), Open sensor. -Up to 16 alarms
Electrical/Mechanical:	Panel mount Power requirements 24 VDC(obtained through PLC on board)
Operating conditions:	During operation 0° to +55°C. 35% to 85% RH, non-condensing During storage -20° to +70°C
Input:	100-240 VAC 50-60Hz +10%-0%
Dimensions:	in. H 6.06 x W 8.62 x D 3.94 (mm H 154 x W 219 x D 55)
Weight:	2.5 lbs. (1.1 Kg)



Call Today

