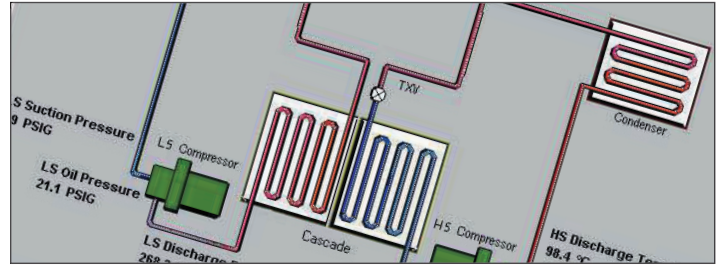




> Solutions Plus Programmer Controller



Solutions Plus PC

The *Solutions Plus PC* offers all of the power and functionality of the original *Solutions Plus* controller in a familiar PC package. In addition to all of the *Solutions Plus Core Features*, the *Solutions Plus PC* includes the following:

- Desktop PC complete with:
 - Ethernet card
 - 48X CD-RW
 - 17" color monitor
 - Mouse and keyboard
 - 2 serial and 1 parallel ports
 - 4 USB ports
 - Microsoft Office Small Business Edition Software (optional)

Solutions Plus PC Network

The *Solutions Plus PC Network* package is intended for the user who must integrate the *Solutions Plus PC* into a PC network. The *Solutions Plus PC Network* package includes all of the *Solutions Plus Core Features*, the *Solutions Plus PC Features*, and the following:

- 1 copy of *PC Anywhere* software loaded on to the *Solutions Plus PC* (chamber PC)
- 1 copy of *PC Anywhere* with detailed loading instructions intended for installation on the user's PC
- 100 feet of interconnect cable to allow the user to remotely access the chamber PC from the user's PC
- Microsoft Office Small Business Edition Software (standard)

Solutions Plus PC Lite

The *Solutions Plus PC Lite* package is intended for the user who does not require the full complement of *Solutions Plus Core Features*. The *Solutions Plus PC Lite* package includes all of the *Solutions Plus PC Features* and all the *Solutions Plus Core Features without the predictive care feature, pressure and temperature transducers in the refrigeration system or data collection/storage capability*.

Solutions Plus (touch screen version)

The original *Solutions Plus* Programmer/Controller with state-of-the-art touch screen command technology.

Solutions Plus Programmer/Controller Core Features

- Data input via pop-up displays
- Graphic display of process variables and set points
- Program entry display allows user to easily confirm entered data
- Predictive Care, operating pressures and temperature display for refrigeration system
- Independent control channels - independent heat/cool P.I.D. (Fuzzy Logic) definable and changeable per channel (extra channels are optional)
- 2000 step ramp/soak programming capability
- Program status display with step time, remaining time, step number, cycles, and mode
- Program step time of 99 hours, 59 minutes, 59 seconds
- Repeat cycles up to 999 times
- Time of day and date, start and/or stop
- Guaranteed soak capabilities per step
- Channel configuration input types (15+) TC, MV, MA, etc.
- Analog devices input module with 20 engineering unit selections
- User definable program restart after power failure
- Manual/auto mode of operation
- Built-in 3.5", 1.44 MB floppy disk drive for data logging, alarm logging, and program storage
- Direct RH readout capability
- Complete processor diagnostics
- One parallel printer port
- Five year lithium battery backup (SRAM)
- PLC (programmable logic control)
- 4 security levels
- Chamber diagnostics/maintenance information including alarms, alarm log, cycle counters, and running time logs
- Menu driven
- Help screens
- 8 event outputs

